

Fixed Income Fund - Class B1

March 2026

GENERAL INFORMATION

ISIN	LU1918787018
TICKER	KYFXIB1 LX Equity
DOMICILE	Luxembourg
SHARE CLASS	Institutional, Accumulation B1
INCEPTION	03/06/2019
CURRENCY	USD
LEGAL STATUS	SICAV, UCITS
SFDR	Art. 6
Fund AuM (\$)	90,558,835
NAV	113.07
FREQUENCY	Daily
MANAGEMENT FEE	0.65%
PERFORMANCE FEE	10% with HWM

INVESTMENT OBJECTIVE

The objective of the Compartment is to offer investors long term net positive performance with exposure to low risks, both in terms of credit and interest rate risks.

The Compartment offers exposure to fixed income securities issued by governments, government agencies, supranational institutions as well as corporations.

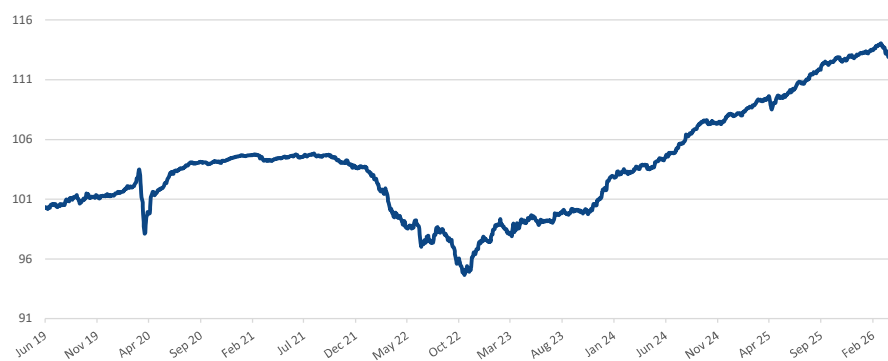
In order to achieve the General Objective, the Compartment will combine a Top down and a Bottom up approach. The Top down approach is based on an analysis of macro-economic variables to define the interest rates curve exposure and overall duration exposure of the Compartment.

Risk Indicator (SRI)

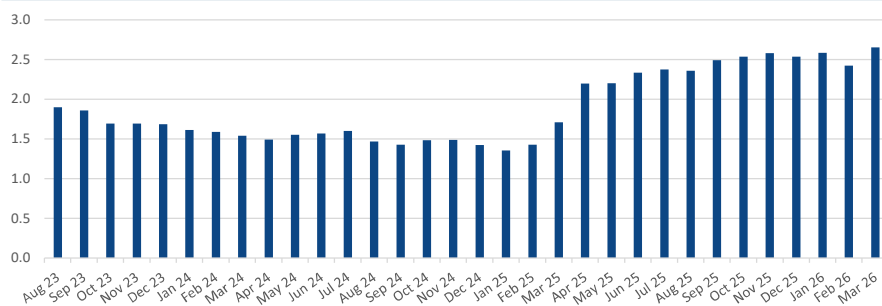
1 **2** **3** **4** **5** **6** **7**

The risk/return profile of the Sub-Fund is represented by a synthetic indicator that ranks the Sub-Fund on a scale of 1 to 7. This scale, in ascending order from left to right represents levels of risk and return from the lowest to the highest.

NAV SINCE INCEPTION



HISTORICAL MODIFIED DURATION



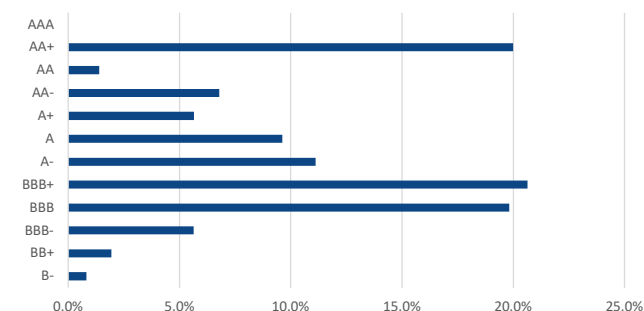
YIELD & DURATION

	Yield	Duration
To Maturity	4.42%	2.68
To Worst	4.21%	2.79

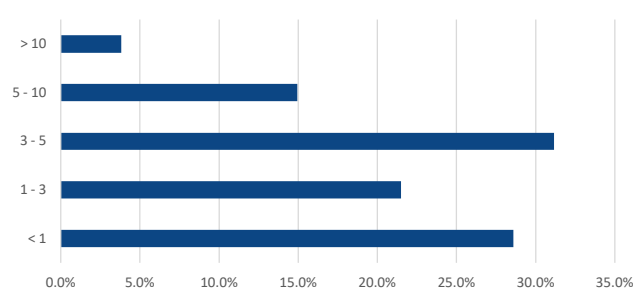
HISTORICAL PERFORMANCE

	JAN	FEB	MAR	APR	MAY	JUN	JUL	AUG	SEP	OCT	NOV	DEC	YTD
2020	0.6%	0.6%	-2.7%	1.8%	1.0%	0.7%	0.5%	0.1%	-0.1%	0.1%	0.4%	0.2%	3.1%
2021	0.0%	-0.3%	-0.2%	0.2%	0.2%	-0.1%	0.2%	-0.1%	-0.2%	-0.4%	-0.3%	0.0%	-0.9%
2022	-1.1%	-0.9%	-1.8%	-1.2%	0.4%	-1.5%	1.0%	-0.9%	-2.1%	-0.4%	1.9%	0.4%	-6.1%
2023	1.6%	-0.8%	0.6%	0.6%	-0.2%	0.0%	0.8%	0.3%	-0.2%	0.0%	1.5%	1.4%	5.7%
2024	0.5%	-0.1%	0.5%	-0.2%	0.7%	0.4%	1.1%	0.8%	0.7%	-0.3%	0.6%	0.2%	5.1%
2025	0.4%	0.6%	0.2%	0.2%	0.2%	0.8%	0.2%	0.7%	0.4%	0.2%	0.3%	0.2%	4.7%
2026	0.3%	0.5%	-0.9%										-0.1%

RATING BREAKDOWN



MATURITY BREAKDOWN (Years)



CONTACTS

Management Company and Investment Manager:

Alpha Investor Services Management
Rue Aldringen 21
L - 1118 Luxembourg
Phone: +352 27 85 471
Email: info@aism.lu

DISCLAIMER