

# Global Corporate Bond Fund - Class A1

May 2025

## GENERAL INFORMATION

ISIN	LU2082324448
TICKER	KUGCEAU LX Equity
DOMICILE	Luxembourg
SHARE CLASS	Institutional, Accumulation A1
INCEPTION	13/12/2019
CURRENCY	USD
LEGAL STATUS	SICAV, UCITS
SFDR	Art. 8
Fund AuM (\$)	98,190,753
NAV	104.52
FREQUENCY	Daily
MANAGEMENT FEE	0.80%
PERFORMANCE FEE	10% with HWM

## INVESTMENT OBJECTIVE

The objective of the Compartment is to offer investors fixed income portfolio returns, mainly through exposure to investment grade global corporate issuers with moderate duration exposure while integrating environmental, social and governance ("ESG") considerations.

The Compartment takes ESG characteristics into account as part of its selection process. In that respect, the Compartment promotes environmental and/or social characteristics within the meaning of Article 8 of SFDR.

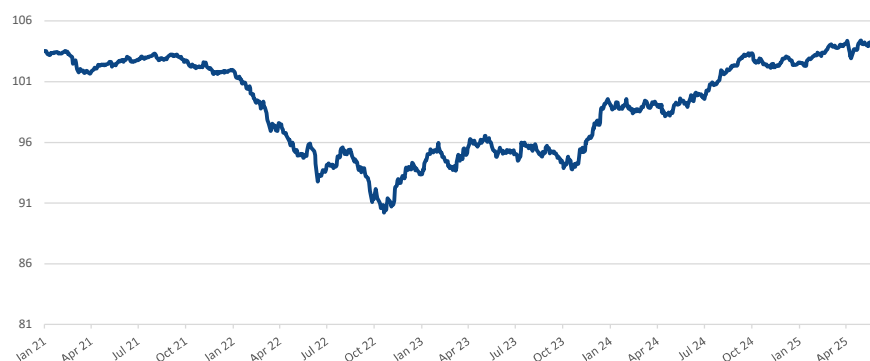
For the assessment, areas like corporate strategy, corporate governance, transparency and the product and service range of a company are taken into account in the investment process and strategy.

## Risk Indicator (SRI)

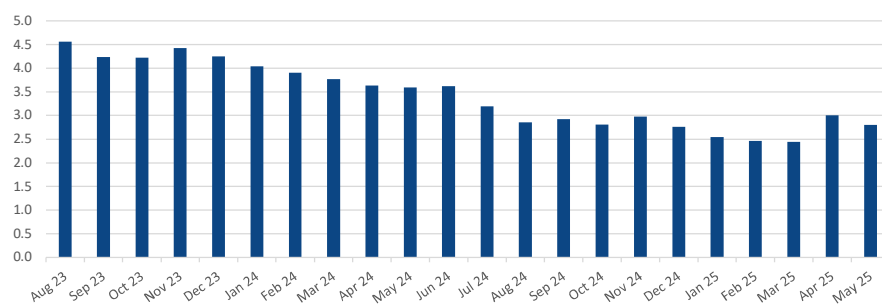
1 2 3 4 5 6 7

The risk/return profile of the Sub-Fund is represented by a synthetic indicator that ranks the Sub-Fund on a scale of 1 to 7. This scale, in ascending order from left to right represents levels of risk and return from the lowest to the highest.

## NAV SINCE INCEPTION



## HISTORICAL MODIFIED DURATION



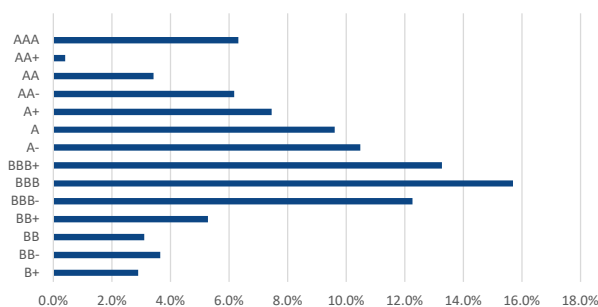
## YIELD & DURATION

	Yield	Duration
To Maturity	5.05%	2.9
To Worst	4.95%	2.8

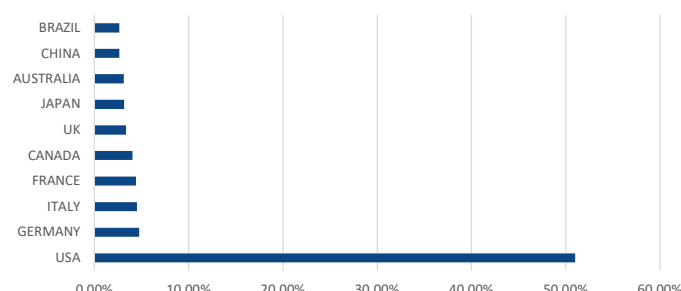
## HISTORICAL PERFORMANCE

	JAN	FEB	MAR	APR	MAY	JUN	JUL	AUG	SEP	OCT	NOV	DEC	YTD
2020	1.1%	0.1%	-4.0%	2.2%	1.6%	0.8%	1.1%	-0.2%	-0.3%	0.0%	1.0%	0.3%	3.6%
2021	-0.2%	-0.8%	-0.8%	0.7%	0.3%	0.1%	0.4%	-0.1%	-0.5%	-0.4%	-0.4%	0.2%	-1.5%
2022	-1.5%	-1.3%	-1.5%	-2.3%	0.4%	-2.1%	1.9%	-1.6%	-2.8%	-0.2%	2.5%	-0.1%	-8.5%
2023	2.1%	-1.4%	1.6%	0.7%	-0.8%	-0.3%	0.7%	0.0%	-1.3%	-0.3%	3.1%	2.3%	6.4%
2024	0.1%	-0.7%	0.6%	-0.9%	0.9%	0.5%	1.6%	0.9%	0.9%	-1.0%	0.6%	-0.3%	3.2%
2025	0.6%	0.8%	0.1%	0.2%	0.1%								1.9%

## RATING BREAKDOWN



## GEOGRAPHICAL BREAKDOWN



## CONTACTS

**BLUESTAR**  
Investment Managers

### Investment Advisor:

BlueStar Investment Managers SA  
via G.B. Pioda 8  
CH - 6900 Lugano  
Phone: +41 91 260 36 70  
Email: info@bluestar-im.ch

**AiSM**  
LUXEMBOURG

### Management Company and Investment Manager:

Alpha Investor Services Management  
Rue Aldringen 21  
L - 1118 Luxembourg  
Phone: +352 27 85 471  
Email: info@aism.lu

## DISCLAIMER

This document is of a commercial nature and not of a regulatory nature. This document does not represent a solicitation to invest. It is each investor's responsibility to ascertain that it is authorised to subscribe or invest into this product. Prior to investing in the product, investors should seek independent financial, tax, accounting and legal advice. KYRON is an investment company with Variable Capital (SICAV) incorporated under Luxembourg Law, listed on the official list of authorised Undertakings for Collective Investment, and it is subject to the supervision of the Commission de Surveillance du Secteur Financier ("CSSF"). The product is a sub-fund of KYRON and has been approved by the CSSF. Alpha Investor Service Management recommend that investors read carefully the "Risk Factors" section of the product's prospectus and the "Risk and Reward" section of the Key Investor Information Document (KIID). The prospectus and the KIID are available free of charge on [www.aism.lu](http://www.aism.lu) or upon request to. The attention of investors is drawn to the fact that, the prospectus is only available in English. In addition, the indicative net asset value is published on the Bloomberg page of the product. There is no guarantee that the fund's objective will be met. This product includes a risk of capital loss. The redemption value of this product may be less than the amount initially invested. In a worst-case scenario, investors could sustain the loss of their entire investment. This factsheet is issued by Alpha Investor Service Management, which is incorporated and registered in Luxembourg with company number B 165086, and registered office at 21 Rue Aldringen, L-1118 Luxembourg, and is regulated by CSSF with Reference Number 500000909.