

Fixed Income Fund - Class B1

May 2025

GENERAL INFORMATION

ISIN	LU1918787018
TICKER	KYFXIB1 LX Equity
DOMICILE	Luxemburg
SHARE CLASS	Institutional, Accumulation B1
INCEPTION	03/06/2019
CURRENCY	USD
LEGAL STATUS	SICAV, UCITS
SFDR	Art. 6
Fund AuM (\$)	93,576,458
NAV	109.96
FREQUENCY	Daily
MANAGEMENT FEE	0.65%
PERFORMANCE FEE	10% with HWM

INVESTMENT OBJECTIVE

The objective of the Compartment is to offer investors long term net positive performance with exposure to low risks, both in terms of credit and interest rate risks.

The Compartment offers exposure to fixed income securities issued by governments, government agencies, supranational institutions as well as corporations.

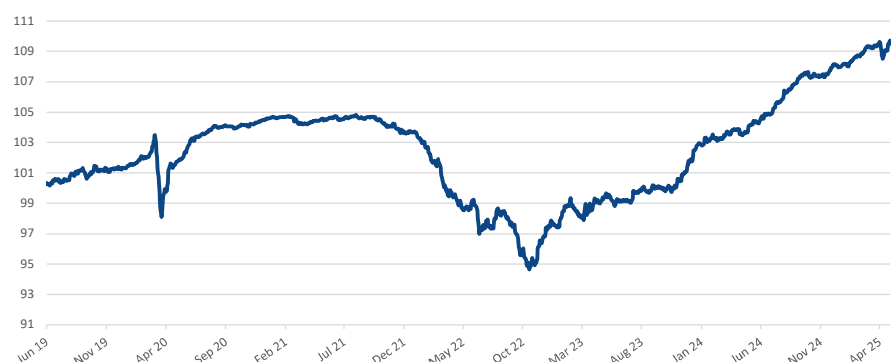
In order to achieve the General Objective, the Compartment will combine a Top down and a Bottom up approach. The Top down approach is based on an analysis of macro-economic variables to define the interest rates curve exposure and overall duration exposure of the Compartment.

Risk Indicator (SRI)

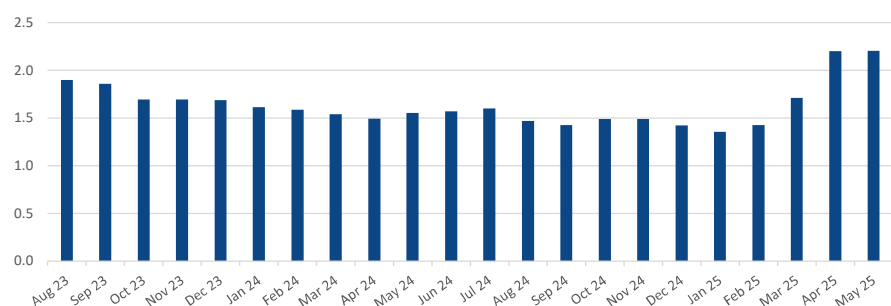
1	2	3	4	5	6	7
---	---	---	---	---	---	---

The risk/return profile of the Sub-Fund is represented by a synthetic indicator that ranks the Sub-Fund on a scale of 1 to 7. This scale, in ascending order from left to right represents levels of risk and return from the lowest to the highest.

NAV SINCE INCEPTION



HISTORICAL MODIFIED DURATION



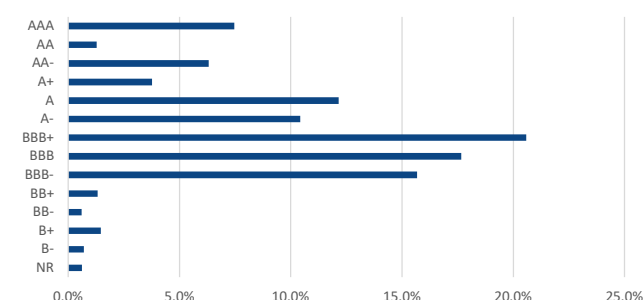
YIELD & DURATION

	Yield	Duration
To Maturity	4.95%	2.15
To Worst	4.9%	2.1

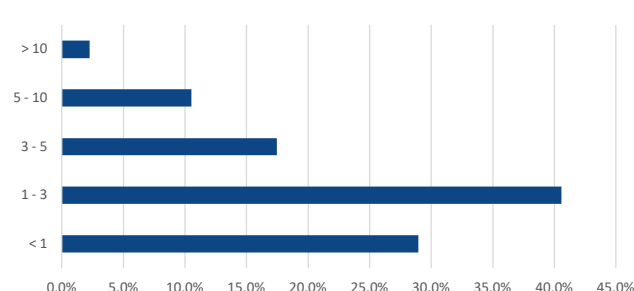
HISTORICAL PERFORMANCE

	JAN	FEB	MAR	APR	MAY	JUN	JUL	AUG	SEP	OCT	NOV	DEC	YTD
2020	0.6%	0.6%	-2.7%	1.8%	1.0%	0.7%	0.5%	0.1%	-0.1%	0.1%	0.4%	0.2%	3.1%
2021	0.0%	-0.3%	-0.2%	0.2%	0.2%	-0.1%	0.2%	-0.1%	-0.2%	-0.4%	-0.3%	0.0%	-0.9%
2022	-1.1%	-0.9%	-1.8%	-1.2%	0.4%	-1.5%	1.0%	-0.9%	-2.1%	-0.4%	1.9%	0.4%	-6.1%
2023	1.6%	-0.8%	0.6%	0.6%	-0.2%	0.0%	0.8%	0.3%	-0.2%	0.0%	1.5%	1.4%	5.7%
2024	0.5%	-0.1%	0.5%	-0.2%	0.7%	0.4%	1.1%	0.8%	0.7%	-0.3%	0.6%	0.2%	5.1%
2025	0.4%	0.6%	0.2%	0.2%	0.2%								1.7%

RATING BREAKDOWN



MATURITY BREAKDOWN (Years)



CONTACTS

DISCLAIMER

This document is of a commercial nature and not of a regulatory nature. This document does not represent a solicitation to invest. It is each investor's responsibility to ascertain that it is authorised to subscribe or invest into this product. Prior to investing in the product, investors should seek independent financial, tax, accounting and legal advice. KYRON is an investment company with Variable Capital (SICAV) incorporated under Luxembourg Law, listed on the official list of authorised Undertakings for Collective Investment, and it is subject to the supervision of the Commission de Surveillance du Secteur Financier ("CSSF"). The product is a sub-fund of KYRON and has been approved by the CSSF. Alpha Investor Service Management recommend that investors read carefully the "Risk Factors" section of the product's prospectus and the "Risk and Reward" section of the Key Investor Information Document (KIID). The prospectus and the KIID are available free of charge on www.aism.lu or upon request to. The attention of investors is drawn to the fact that, the prospectus is only available in English. In addition, the indicative net asset value is published on the Bloomberg page of the product. There is no guarantee that the fund's objective will be met. This product includes a risk of capital loss. The redemption value of this product may be less than the amount initially invested. In a worst-case scenario, investors could sustain the loss of their entire investment. This factsheet is issued by Alpha Investor Service Management, which is incorporated and registered in Luxembourg with company number B 165086, and registered office at 21 Rue Aldringen, L-1118 Luxembourg, and is regulated by CSSF with Reference Number 50000909.